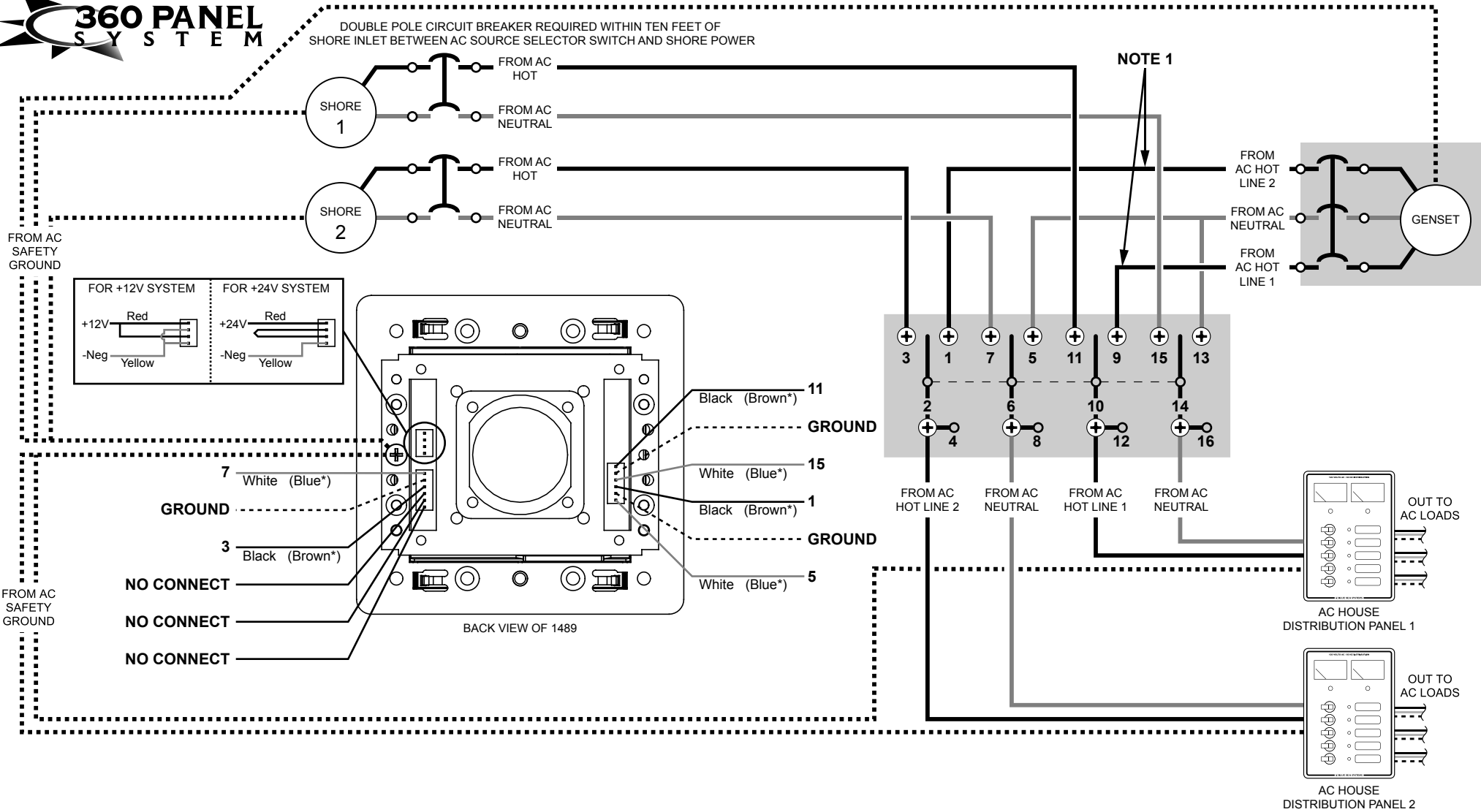
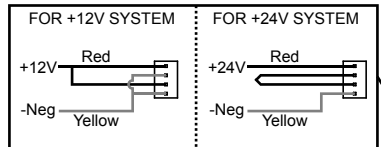


DOUBLE POLE CIRCUIT BREAKER REQUIRED WITHIN TEN FEET OF SHORE INLET BETWEEN AC SOURCE SELECTOR SWITCH AND SHORE POWER



NOTE 1



FROM AC SAFETY GROUND

FROM AC SAFETY GROUND

BACK VIEW OF 1489

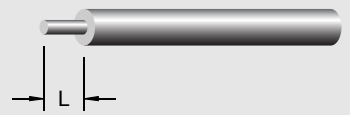
Warning: Do not cut out resistors in wire harness.

Note: Do not confuse the white neutral current carrying wires, sometimes called "ground", with the green non-current carrying wires, sometimes call grounding. These two wires must only be connected at the source of power, nowhere else.

Please refer to the 360 Panel System Installation Manual for additional installation information.

NOTE 1: For 120V Genset, supply Line to terminals 1 and 9, Neutral to terminals 5 and 13.

Panel Part Number	Switch Part Number	L	
		Inches	Millimeters
1481, 1482, 1484, 1485, 1489	9009, 9010, 6337	0.35	9
1480, 1483, 1486, 1487, 1488	9011, 9019, 9077, 9093	0.60	15



Wire Strip Length

* For 230V applications